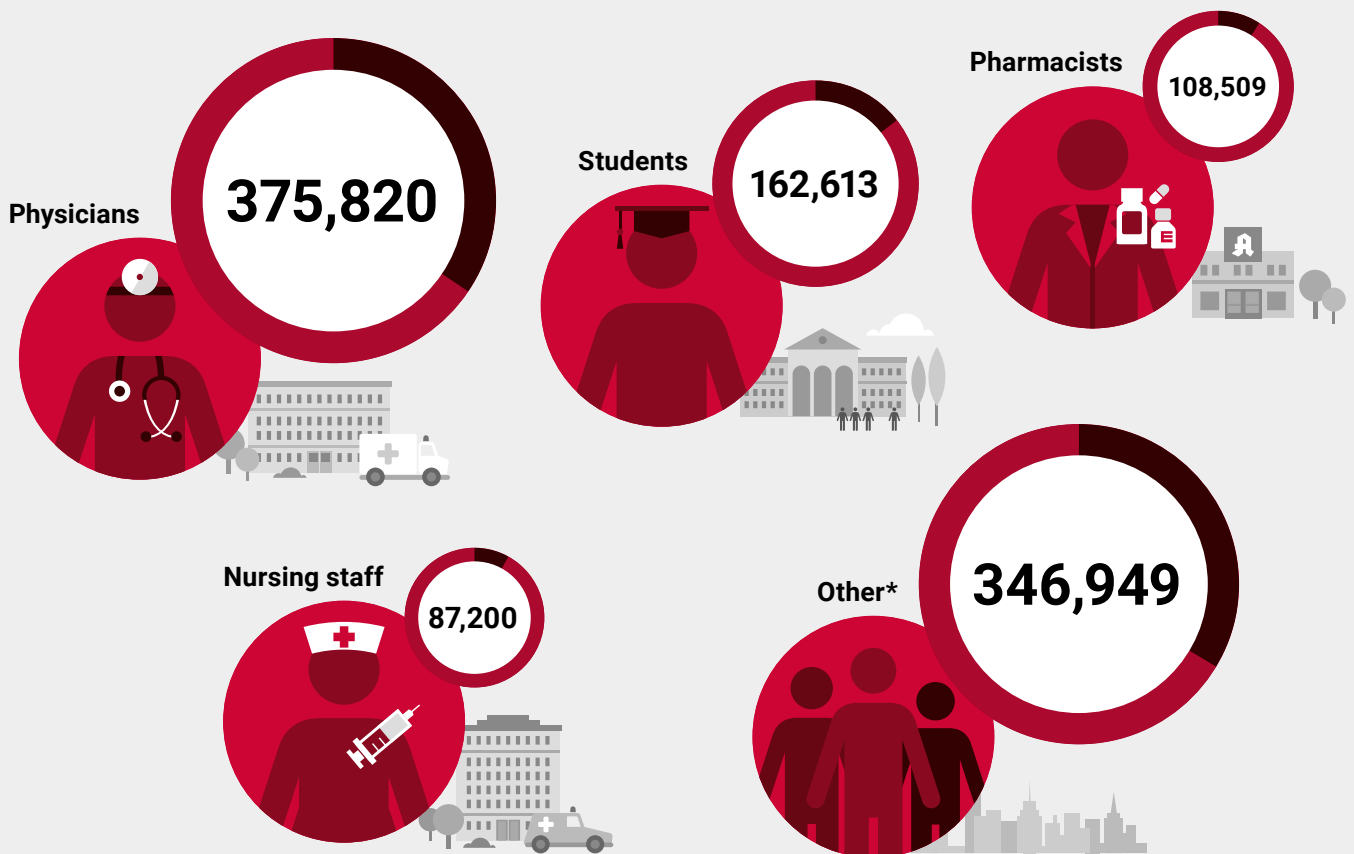


Your key to success

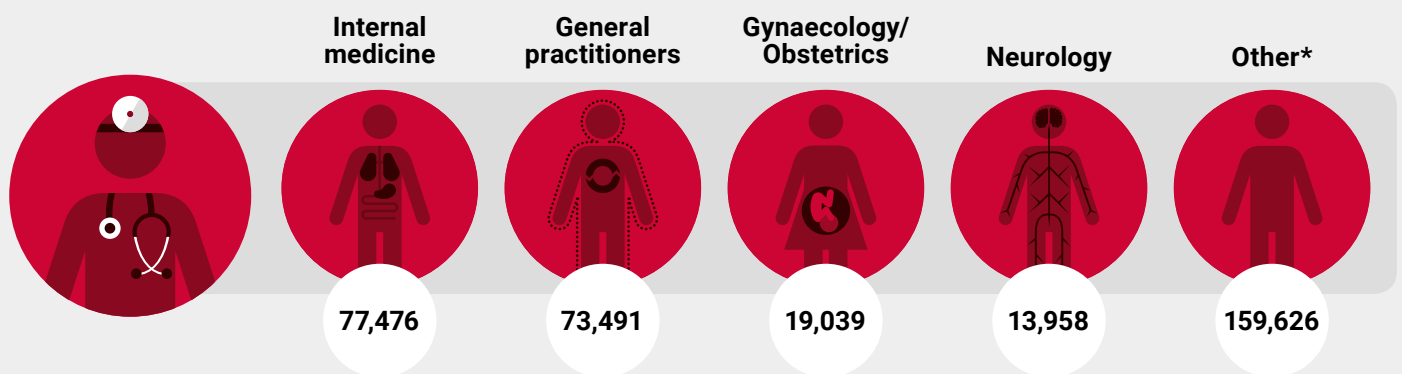


DocCheck – the Social Medwork

Networks for better healthcare: benefit from simplified access to medical information and a direct exchange of ideas with the professional community. DocCheck has over 1,000,000 registered users, making it Europe’s largest medical portal for healthcare professionals. This huge platform is the perfect place to address your target groups and market your products.



Distribution of physicians by specialty



* Your target group is not listed? Ask us for a detailed breakdown of the categories.

Log in for more value

The gateway to your medical target group

Due to legal restrictions, some online content may only be accessed by healthcare professionals. Setting up and maintaining your own password-protected system takes a lot of time and effort, but there is an alternative: DocCheck Login.

With the DocCheck Login, you can provide healthcare professionals with access to expert information and benefit from a whole host of additional services. It features the latest analytical tools, so you can get to know your target group better and tailor your marketing activities accordingly.

There are four DocCheck Login licence versions available:



1. Basic

- User registration and profession verification
- User support
- Login/iFrame in six languages
- Password protection with profession check
- Online configuration of the login details in DocCheck CReaM



2. Economy

- All features of the Basic Licence
- Additional security through transfer of encrypted parameters
- Anonymous recognition of returning website visitors
- Routing of visitors according to profession, country and language



3. Business

- All features of the Basic and Economy Licences
- Transfer of personal data with the visitor's consent
- Access for company employees via email domain
- Retention of one single domain after logging in, even for multiple domains



4. App Login

- DocCheck Login for your iOS and Android apps

You can upgrade your DocCheck Login with these additional functions:

- **Statistics:** Detailed statistics about the login behaviour of your website visitors
- **Pool:** Online storage of the data collected using the Business licence



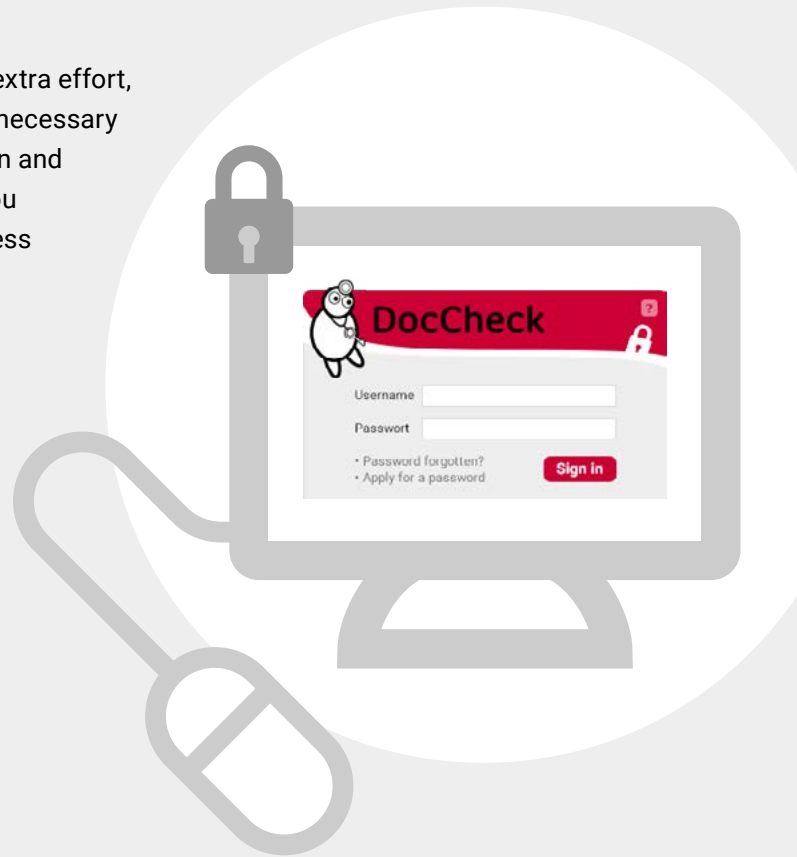
The Basic Licence

Free password protection for your website

Create a protected area on your website without any extra effort, costs or user administration. DocCheck supplies the necessary infrastructure for registration, professional verification and support, as well as the login form for your website. You decide which professional groups are allowed to access your website.

The advantages

- Legislation-compliant protection
- Exclusive access
- More than 1,000,000 healthcare professionals



DocCheck CReaM

DocCheck CReaM (<https://crm.doccheck.com>) is the online platform behind the DocCheck Login, which makes managing your login details a piece of cake:

- Create new logins for your websites
- Edit the access privileges assigned to the professions
- Get the HTML code required to integrate the login form into your website

But that's not all: DocCheck CReaM also lets you create test passwords for your website, find out about the login behaviour of your website visitors using the additional statistics function, as well as view user details with the additional pool function.

Free



The Economy Licence

More features, total control

The Economy Licence offers all the benefits of the Basic Licence – and much more. You'll enjoy total control in the areas of security, tracking and routing.

Parameters and encryption

With the transfer of parameters, you can pass through additional parameters of your website (e.g. session ID) which can be validated using a checksum. So you'll enjoy greater security.



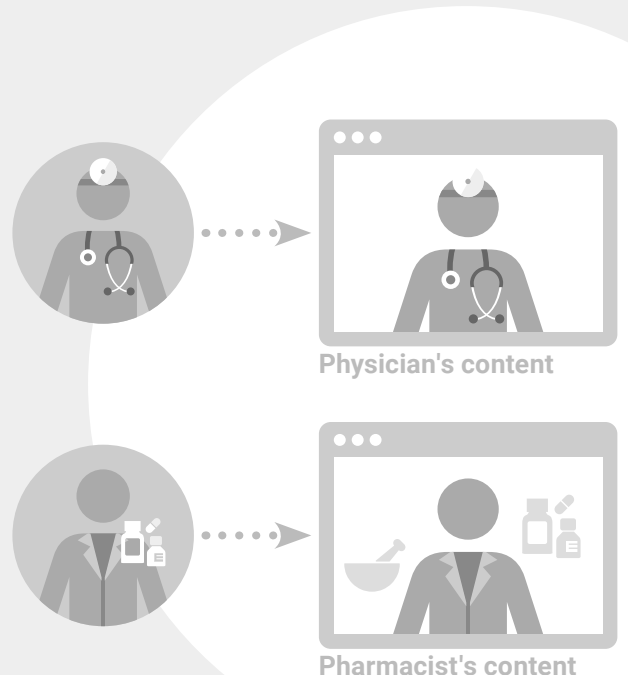
Unique Key

Recognise your visitors anonymous when they return to your website and customise the special offers they see on your website. DocCheck assigns each visitor a unique key. This ID is appended to the URL as a GET parameter after visitors have logged in.



Routing

Sort your users according to their profession, language or country – and direct them to different parts of your website. For example, after logging in, a doctor can be routed to a different page than a pharmacist would be directed to.



€ 1,500 per calendar year

+ € 1,200 initial set-up fee



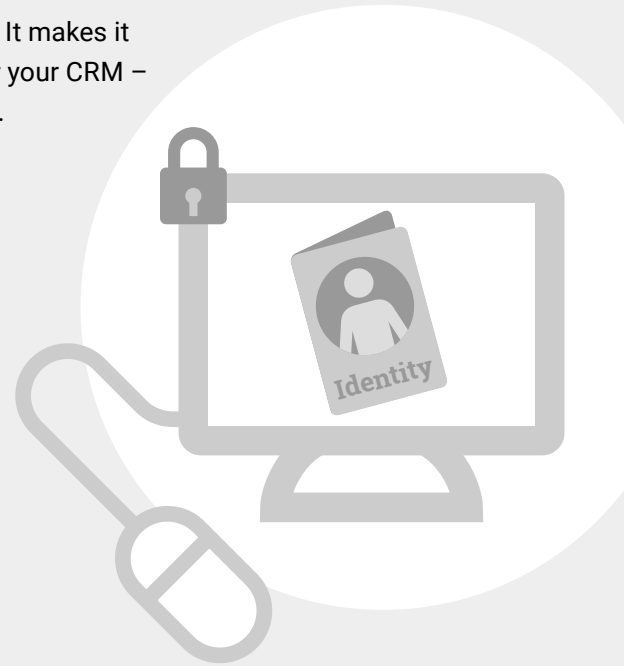
The Business Licence

Exclusive access

The Business Licence contains all features of the Economy Licence. It makes it possible to gather valuable information about your website users for your CRM – plus you can also set up an exclusive user group for your employees.

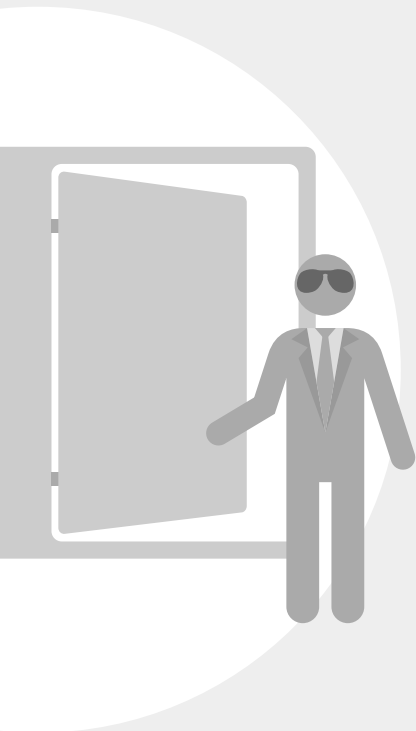
Personal

This feature is the ideal foundation for your online CRM system and for personally addressing users. When users log in for the first time, they are required to fill out an online form and agree to the forwarding of their personal data stored on DocCheck. This data is then transferred as URL parameters and can be used in your CRM system. From this point on, it is possible to identify individual users when they log in thanks to their unique key.



Access for company employees

Competitors should not be allowed to access your websites – that's why there's an option for excluding the professional group "Pharmaceutical Industry Employees". However you can still grant access to your own staff that have a DocCheck access (e.g. employees working outside the office), using the access option for company employees. The visitor's email address domain is used to determine whether they are one of your own employees.



Alias

Is your website available on several different domains, such as www.indication24.com and www.indication-online.com? With Alias, visitors are always redirected to the target URL after they log in. This avoids confusion and gives visitors peace of mind.



€ 4,500 per calendar year

+ € 4,200 initial set-up fee



App Login

DocCheck goes mobile – with the DocCheck Login, you can now also control which healthcare professionals are allowed to access your medical apps.

We offer three DocCheck Mobile Login versions for the operating systems iOS and Android:



App Login Basic

- Integration of login via the framework supplied by us
- Professional group checking and filtering via DocCheck CReaM

1. to 3. login: € 350*

4. to 6. login: € 315*

+ € 250 initial set-up fee



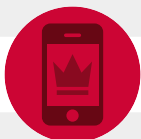
App Login Economy

- All elements of the Basic App Login
- Using the unique key you can recognise your users anonymously at their next visit
- Easy access for your company's employees, while at the same time excluding competitors

1. to 3. login: € 950*

4. to 6. login: € 855*

+ € 350 initial set-up fee



App Login Business

- All elements of the Basic and Economy App Logins
- Personal data submitted following consent from the user, so that you can construct your own user database
- Easy access for your company's employees, while at the same time excluding competitors

1. to 3. login: € 1,950*

4. to 6. login: € 1,755*

+ € 500 initial set-up fee

* Prices apply per calendar year, app, and OS.



Additional functions

Go all out

Want to really take it up a notch? We offer a range of additional functions to help you get even more out of your licence.



Pool

The pool function is available in conjunction with the Business Licence. With this function, the data provided by your visitors is automatically stored in a database. You can

- view and download the data at any time online via DocCheck CReaM
- access the pool via a web service and synchronise the information with your CRM system

€ 2,500*



Statistik

The statistics function is a valuable addition to any login licence. It allows you to find out more about who is using your website:

- Detailed analysis of login behaviour, with statistics about the user's profession, specialisation, area of employment, and region
- Evaluation of one or more of your company's websites via DocCheck CReaM

€ 3,000*

* per calendar year



Price list

	DocCheck Login			DocCheck App Login		
	Basic	Economy	Business	Basic	Economy	Business

Password protection features

User registration Profession check User support Login/iFrame in 6 languages	●	●	●	●	●	●
Simple password protection Login administration via CReaM	●	●	●	●	●	●
Parameter transfer Parameter encryption		●	●			
Unique Key		●	●		●	●
Routing (country, language, profession)		●	●		●	●
Transfer of personal user data upon consent			●			●
Domain-based access			●			●
Alias for several domains			●			

Licence fees (per calendar year)

1.-3. login	€ 0	€ 1,500	€ 4,500	€ 350*	€ 950*	€ 1,950*
4.-6. login	€ 0	€ 1,350	€ 4,050	€ 315*	€ 855*	€ 1,755*
7.-9. login	€ 0	€ 1,200	€ 3,600	available on request		
from 10. login	€ 0	available on request				
Initial set-up fee		€ 1,200	€ 4,200	€ 250	€ 350	€ 500

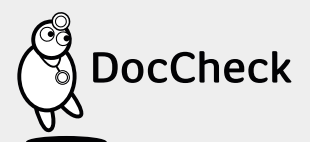
Additional options (per calendar year)

Statistics	€ 3,000	€ 3,000	€ 3,000			
Pool for Personal feature			€ 2,500			

The above prices refer to individual licences for use with one website with one login.
Please contact us if you require a company wide licence (for all company websites).

All prices are in euros and do not include VAT.

* per app and per operating system





Your contact



Cem Aksoy

Technical Product Manager

+49(0)221.9 20 53-594
cem.aksoy@doccheck.com



Björn Brandt

Technical Product Manager

+49(0)221.9 20 53-595
bjoern.brandt@doccheck.com



DocCheck Medical Services GmbH
Vogelsanger Str. 66, 50823 Cologne, Germany
www.doccheck.com/com/